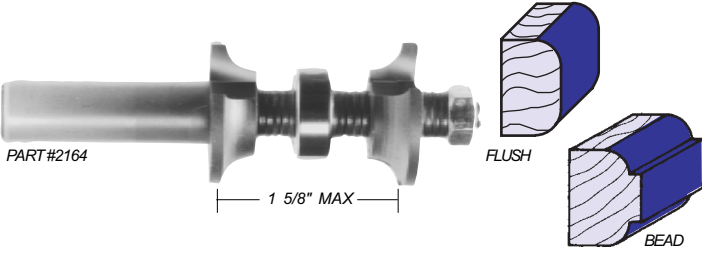


# ROMAN OGEE • CHAMFER

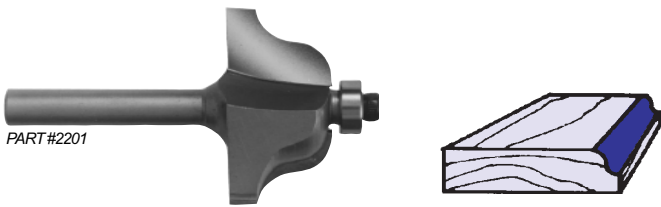
## DOUBLE ROUND OVER with Adjustable Cutting Length



Part Number	Radius	Large Diameter	Overall Length
<b>1/2" SHANK</b>			
2160	1/8"	1 1/8"	3 3/4"
2162	3/16"	1 1/4"	3 3/4"
2164	1/4"	1 3/8"	3 3/4"

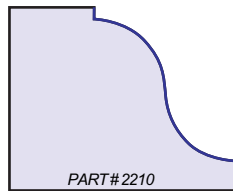
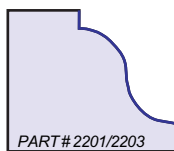
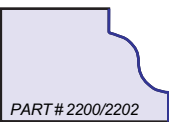
Assemblies Sold with B5 Bearing for flush round over  
 Use B20 Bearing for 1/16" Bead • Use B27 Bearing for 1/8" Bead  
 Replacement Cutter Heads: Add RH to Part Number for cutter next to shank,  
 Add LH to Part Number for end cutter.  
 Example: 2160LH

## ROMAN OGEE



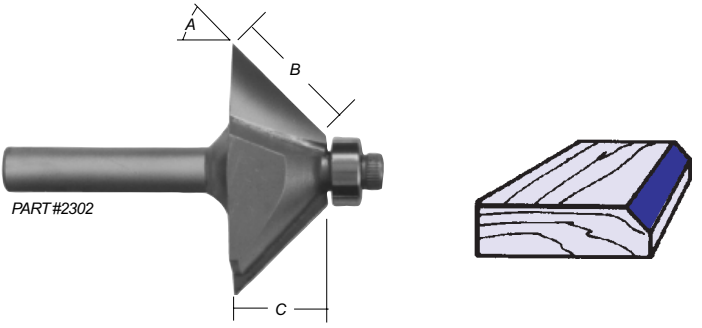
Part Number	Radius	Large Diameter	Cutting Length	Overall Length
<b>1/4" SHANK</b>				
2200	5/32"	1 1/8"	9/16"	2"
2201	1/4"	1 1/2"	11/16"	2 1/4"
<b>1/2" SHANK</b>				
2202	5/32"	1 1/8"	9/16"	2 1/4"
2203	1/4"	1 1/2"	11/16"	2 3/8"
2210	3/8"	2"	1"	2 3/4"

Bearing Number: B3



PROFILES SHOWN ACTUAL SIZE

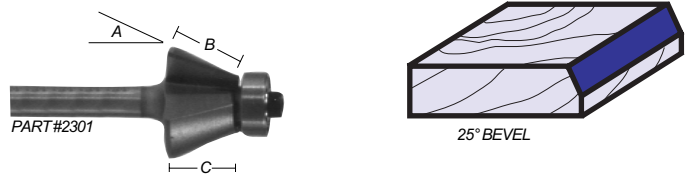
## 45° CHAMFER



Part Number	"A" Degree of Angle	"B" Cutting Length	"C" Cutting Height	Overall Length
<b>1/4" SHANK</b>				
2302	45°	5/8"	7/16"	2"
<b>1/2" SHANK</b>				
2305	45°	5/8"	7/16"	2 1/4"
2306	45°	1 1/16"	3/4"	2 1/2"
2310	45°	1 1/2"	1 1/16"	3"

Bearing Number: B3

## EDGE BEVEL



Part Number	"A" Degree of Angle	"B" Cutting Length	"C" Cutting Height	Overall Length
<b>1/4" SHANK</b>				
* 2298	7°	3/8"	3/8"	2 1/8"
2300	15°	1/2"	1/2"	2"
* 2300A	15°	1/4"	1/4"	2"
2301	25°	9/16"	1/2"	2"
1 2308	30°	7/8"	3/4"	2 3/4"
<b>1/2" SHANK</b>				
3 2325	15°	1"	15/16"	2 3/4"
2 2307	22 1/2°	15/16"	7/8"	2 3/4"
1 2309	30°	7/8"	3/4"	2 3/4"

Bearing Number: B3

\* Used on Laminate Trim

<sup>1</sup> Used for six sided boxes

<sup>2</sup> Used for eight sided boxes

<sup>3</sup> Used for twelve sided boxes

